

# Sekonic Announce Exposure Profile Target II

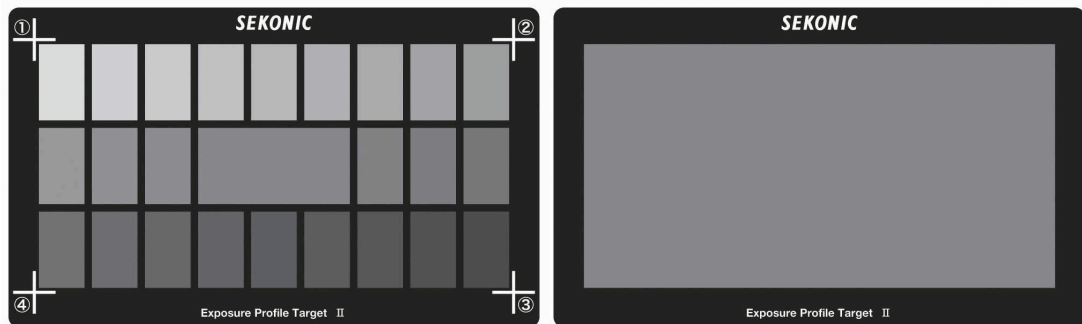
SEKONIC

JP Distribution is pleased to announce the new Exposure Profile Target II from Sekonic.

It is a 25 patch test target that gathers more information about the camera's exposure characteristics than the previous test target. It consists of two sides; an 18% grey card used to custom white balance digital cameras before profiling and on the other, a profile target consisting of a central 18% grey patch that is surrounded by 24 patches arranged in 1/6<sup>th</sup> stop values, making it successively brighter and darker.

The Exposure Profile Target II offers faster, more accurate testing as it requires only three shots to gather a wide range of exposure data from the camera's imaging system. The first shot is made at the normal, metered exposure determined by a Sekonic L-758DR. The second shot is made at -3EV below the metered exposure and the third shot at +3EV above the metered exposure.

The result is total exposure accuracy.



The Sekonic Exposure Profile Target II retails at £129.99 Inc vat (JP Code 651118)

JP Distribution, Hempstalls Lane, Newcastle under Lyme, Staffordshire, ST5 0SW, England.  
Tel: 01782 753300 Fax: 01782 753399 Email: [info@johnsons-photopia.co.uk](mailto:info@johnsons-photopia.co.uk) Web: [www.johnsons-photopia.co.uk](http://www.johnsons-photopia.co.uk)